

**GOLDEN**  
ICON

A new commercial landmark takes shapes...





**GOLDEN**  
ICON

Architectural statements and breakthrough design, luxury and trendy styling - today's professionals expect much more from their work spaces than four walls, a desk and a chair. GOLDEN ICON stands for uniquely flexible, customized showrooms & offices, which can expand to accommodate the needs of growing businesses. You need a work space that signals your stature, showcases your company's image and reflects your lifestyle:

GOLDEN ICON is set to become a landmark destination. GOLDEN ICON will feature specialty outlets to address the growing lifestyle needs of a vast segment of the population. It will cover well-designed space and is strategically located in a heart of city. GOLDEN ICON will offer many outstanding advantages for a retailer & corporate: a range of world-class facilities, easy access, a well-planned product mix and as a result of all these great exposure of products and services to a regular stream of both new and repeat customers.



# GROUND FLOOR PLAN



ULTRA MODERN COMMERCIAL SPACES WITH IDEAL BUSINESS ENVIRONMENT.



  
**GOLDEN**  
ICON





# 1<sup>ST</sup> FLOOR PLAN (SHOWROOM)

1<sup>ST</sup> FLOOR PLAN



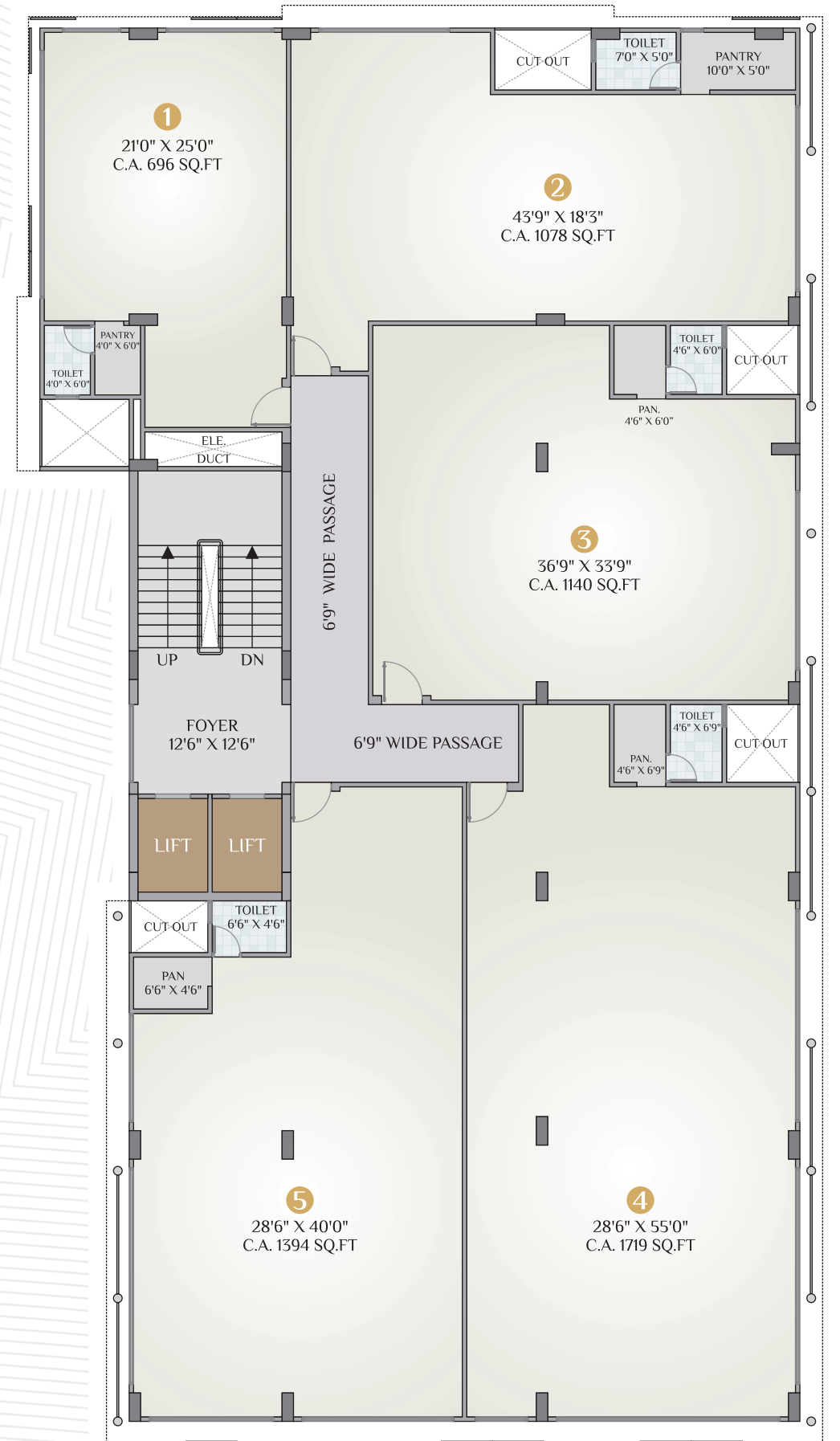
# 2<sup>ND</sup> FLOOR PLAN (SHOWROOM)

2<sup>ND</sup> FLOOR PLAN



# 3<sup>RD</sup> TO 7<sup>TH</sup> FLOOR PLAN (OFFICE)

3<sup>RD</sup> TO 7<sup>TH</sup> FLOOR PLAN





AN ICONIC LANDMARK THAT SIGNALS YOUR STATURE AND SHOWCASES YOUR COMPANY'S IMAGE.

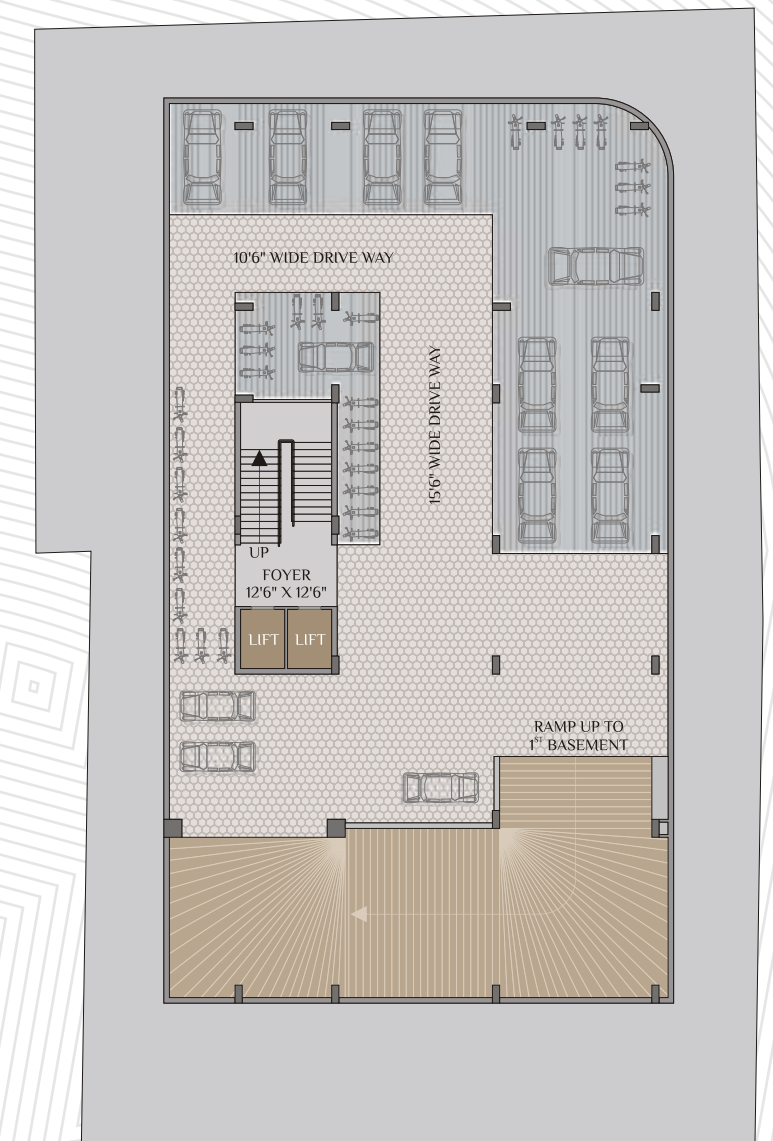
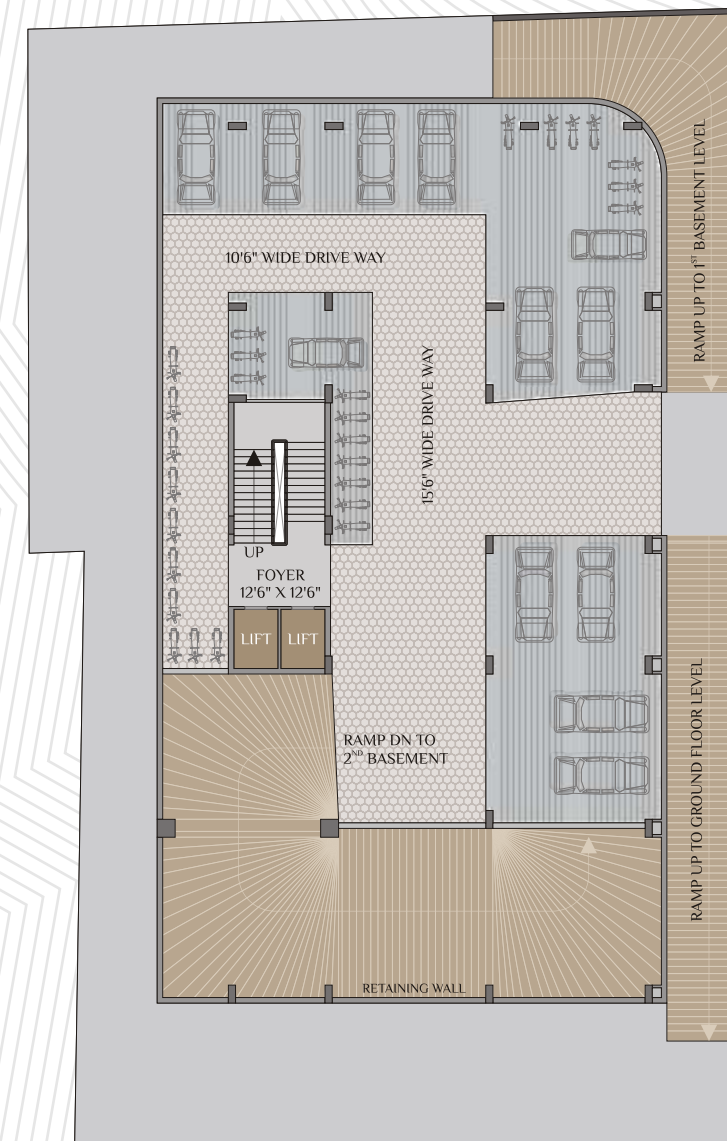


## 1<sup>ST</sup> BASEMENT PLAN

## 2<sup>ND</sup> BASEMENT PLAN

### 1<sup>ST</sup> BASEMENT PLAN

### 2<sup>ND</sup> BASEMENT PLAN



## SPECIAL FEATURES

- Seismic structure design.
- Provision of drain pipes for split AC.
- Fully Automatic high speed lift.
- Telephone and AC points in all the Showrooms and offices.
- Ample parking space by providing the stack parking facility in the basement.







# SPECIFICATIONS

## FLOORING

- Vitrified Tiles in all showrooms and offices.
- Entrance foyer with granite flooring.
- Lift wall cladding in granite for all the floors.
- Staircase with granite flooring for all the floors.

## ELECTRIFICATION

- Concealed 3 phase electrical copper wiring.
- Modular switches.
- ISI wires, MCB and ELCB.

## WINDOWS

- Aluminum anodised windows.
- Granite frames on window sills.

## TOILETS/BATHROOMS

- Concealed plumbing.
- Health Faucet.
- Bathroom dado up to 7' height of designer series.
- Wooden frames for bathrooms.
- Branded sanitary wares and CP fittings.

## COLOR

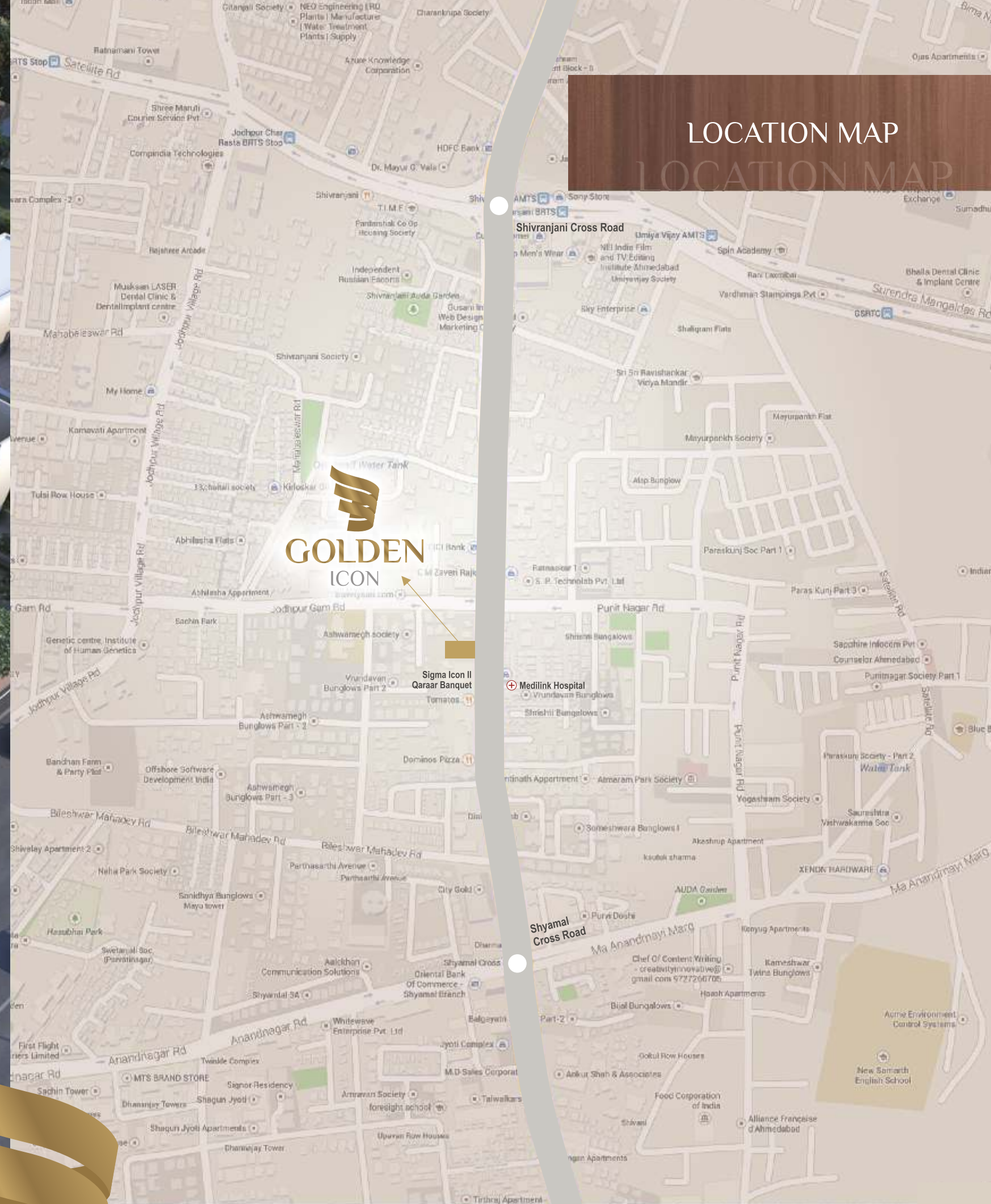
- Internal walls finished with wall putty.
- Weather shield acrylic emulsion paint for exteriors.







# LOCATION MAP



**GOLDEN  
ICON**

Sigma Icon II  
Qaraar Banquet

**Please Note**

1. Developers reserves the rights for attraction of specification and design.
2. Only internal changes will be allowed with prior permission & shall be charged extra.
3. All dimension/area are approximate average & subject to variations.
4. Irregular Payments shall cause cancellation of booking.
5. Legal expenses, Service Tax & other Govt. Charges, Stamp & Registration, Maintenance charges & society membership fees shall be borne by the members.
6. This brochure is not to be treated as part of the legal document it is for the easy display of the project.
7. Subject to Ahmedabad jurisdiction.





Nr. Sigma Icon II, Opp. Medilink Hospital,  
Nr. Shyamal Cross Road, 132 Feet Ring Road,  
Satellite, Ahmedabad 380015.

For more detail contact on :  
**+91 98254 14343, +91 98250 06305**

Developer :  
**NAVDEEP REAL ESTATE PVT. LTD.**  
Ahmedabad

Architects



99studiodata@gmail.com  
+91-79-40028361 / 62

Structure Consultant



+91-79-40037661 / 26751800

Mep Consultants

**TRIARCH CONSULTANTS**  
+91 8734819938